

Marlin Cove

APARTMENT LIVING

FOSTER CITY

A Place to Call Home



REFRESHED LIVING FOR A RENEWED YOU.

Choose from 1 and 2 bedroom apartments.

- Italian Ceramic Tile in Entry and Kitchen
- Modern Stainless Steel Appliances Throughout
- Granite Counter Tops Throughout
- Full Size Walk-in Closets With Built in Organizers
- Wood-burning Fireplaces in Select Units
- Private Patios or Balconies
- In-Home Washers/Dryers
- Pet Friendly (restrictions apply)
- Views of the Peninsula Hills and The Bay

ENJOY RESORT-LIKE AMENITIES IN YOUR OWN BACKYARD.

Here's what everyone gets to enjoy at Marlin Cove.

- Atrium-style Enclosed Swimming Pool Heated Year Round
- BBQ - Picnic Area
- Manicured Grounds
- Private, Gated, Underground Parking
- Outdoor Spa
- Community Lounge and Kitchen
- Fitness Center with Cardio/Strength Training Equipment and Free Weights
- Digital Package Lockers with Immediate Notification
- Wi-Fi In Clubhouse and Pool Lounge Area
- Night Patrol



1000 Foster City Blvd
Foster City CA 94404

844.469.2605
marlincoveapartments.com



SARES•REGIS Group



Marlin Cove

COMMUNITY MAP





Marlin Cove

THE DOLPHIN
1 BEDROOM - 1 BATHROOM
755 sq. ft.



1000 Foster City Blvd
Foster City CA 94404

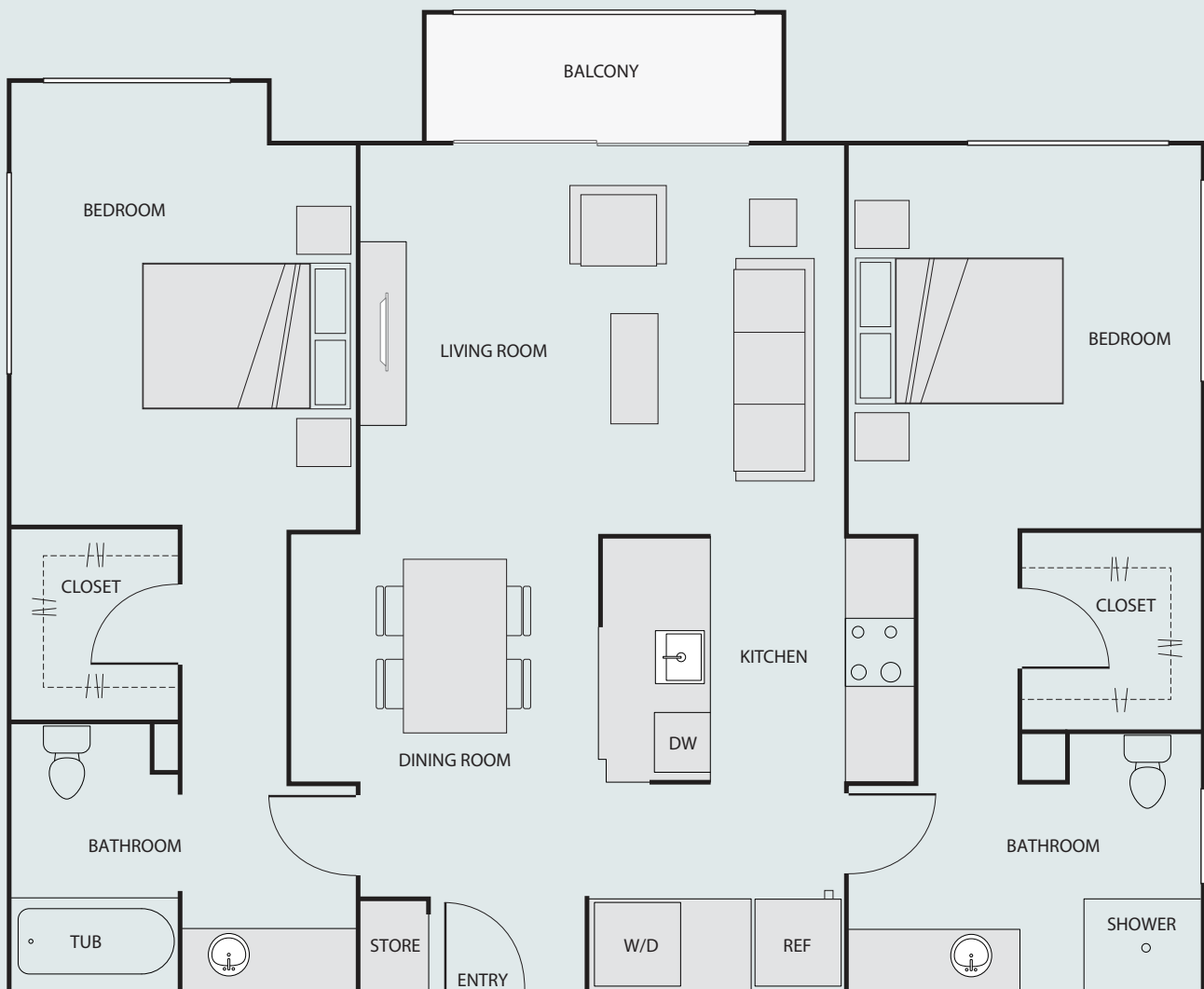
844.469.2605
marlincoveapartments.com

Plans shown here are representations. Total square footage, room dimensions, window locations, washer/dryer, closet, tub/shower, and patio/deck configurations, if applicable may vary in individual apartments from the plans depicted here.



Marlin Cove

THE SEAHORSE
2 BEDROOM - 2 BATHROOM
1094-1129 sq. ft.



1000 Foster City Blvd
Foster City CA 94404

844.469.2605
marlincoveapartments.com

Plans shown here are representations. Total square footage, room dimensions, window locations, washer/dryer, closet, tub/shower, and patio/deck configurations, if applicable may vary in individual apartments from the plans depicted here.



Marlin Cove

THE MARLIN
2 BEDROOM - 2 BATHROOM
1133 sq.ft.



1000 Foster City Blvd
Foster City CA 94404

844.469.2605
marlincoveapartments.com

Plans shown here are representations. Total square footage, room dimensions, window locations, washer/dryer, closet, tub/shower, and patio/deck configurations, if applicable may vary in individual apartments from the plans depicted here.